

W COSJET SR

COSJET SR

Experience Hair Removal
& Vascular Lesion at once

System Type	Nd:YAG
Wavelength	1064nm & 1320nm
Max Energy	50J(1064nm) / 15J(1320nm)
Pulse Duration	0.3 to 1ms(Short), 1 to 100ms(Long)
Repetition Rate	Up to 10Hz
Cooling System	Skin Cooling Spray Sapphire Window Contact Cooling
Dimensions	749(W)x490(D)x1256(H)mm
Weight	40kg



For Export Only

Head Office
64 Techno 8-ro, Yuseong-gu, Daejeon, Korea

WONTECH INC
200 Lakeside Dr., Suite 260, Horsham, PA, USA
(+1) 267-803-6880 sws@wtlaser.com

WONTECH JAPAN CO., LTD.
1F, 3-16-6, Hatchobori, Chuo-ku, Tokyo, Japan 104-0032
(+81) 3-5542-8566 skseo@wtlaser.com

WONTECH CHINA CO., LTD.
3F, Hyundai motor building, 38 xiaoyun road,
chaoyang district, Beijing
(+86) 400-110-0082

Pangyo Branch Office
3F, 22, Deawangpangyo-ro 712beon-gil, Bundang-gu,
Seongnam-si, Gyeonggi-do, Korea

E-mail. wtlaser@wtlaser.com
Tel (+82) 31 1670-1450 Fax (+82) 42 934 9491

www.wtlaser.com

www.facebook.com/wtlaser

www.instagram.com/wontech_laser



Experience Hair Removal
& Vascular Lesion at once

Long-Pulsed 1320nm
& 1064nm Nd:YAG Laser

COSJET SR

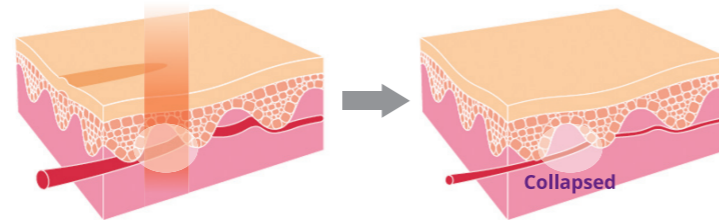
COSJET SR is an excellent laser system with two wavelengths of 1064nm and 1320nm.

This advanced Long-pulsed Nd YAG laser could utilize in safe and effective treatments for skin rejuvenation with Genesis Mode, hair removal with stable & strong output energy, vascular lesions, etc. Contacting cooling system and SCS Cryo gas in COSJET SR would be definitely a great cooling solution during treatment. The 1320nm is also one of the best wavelengths for treatment of Acne lesions. The innovative & powerful device of COSJET SR should help you to lead overall lesions very effective during treatment.

How does it work?

Principle of Vascular Treatment

- Coagulation of hemoglobin in veins



Energy Control

Apply different level energy according to depth, width, thickness of target vein Laser penetration depth varies upon spot size and pulse duration. Find proper parameter for the target depth to test the energy level before procedure

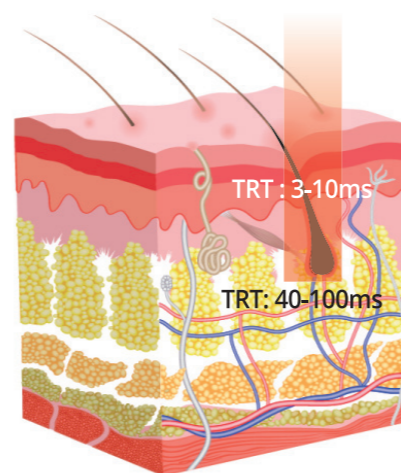
Principle of Hair Removal

Breakdown of hair follicle and elimination of surrounding veins through selective photothermolysis

Application of energy longer than Thermal Relaxation time (TRT) of epidermal melanin and shorter than TRT of follicle melanin

Elimination of hair follicle located deep in skin using Penetration depth of 1064nm

Low absorption by other cells
Low possibility of skin texture change or unwanted pigmentation

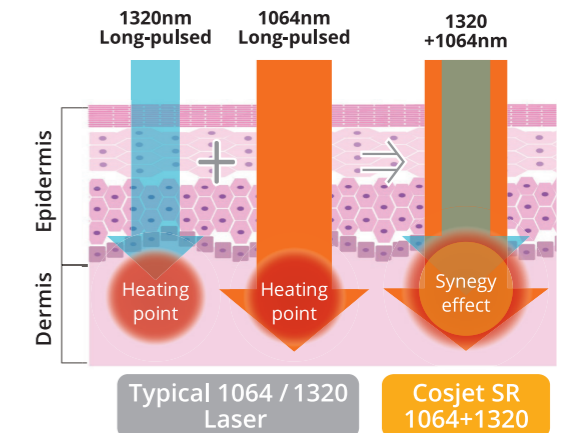


Melanin TRT : 3-10ms
Hair follicle TRT : 40ms-100ms

Good Performance for Vascular Lesions, Hair Removal & Dermal Remodeling

Features

- Safe and Effective Cooling System
Gas cooling & Contact cooling
- Highly effective for Hair removal and Vascular lesion
- Available for all skin types for skin rejuvenation by Duo lifting & Genesis mode
- Fast treatment with large spot size (10mm)
- Applied 1320nm which is effective for skin rejuvenation



Indications

Vascular Lesions	Dermal Pigmented Lesions	Hair Removal	Dermal Remodeling
Both superficial capillaries & Deep veins	Nevus of Ota Port Wine Stain Vascular Melasma	Fine Coarse Normal	Texture Pores Fine wrinkles Brightening

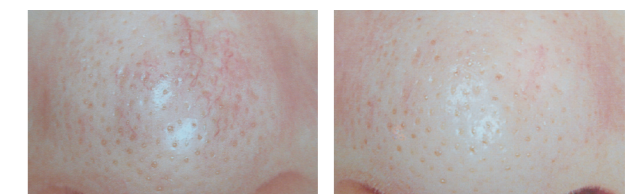
Before & After

Hair removal



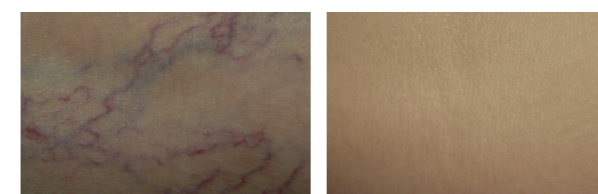
| Before | | After |

Telangiectasia



| Before | | After |

Leg vein



| Before | | After |

Acne



| Before | | After |